

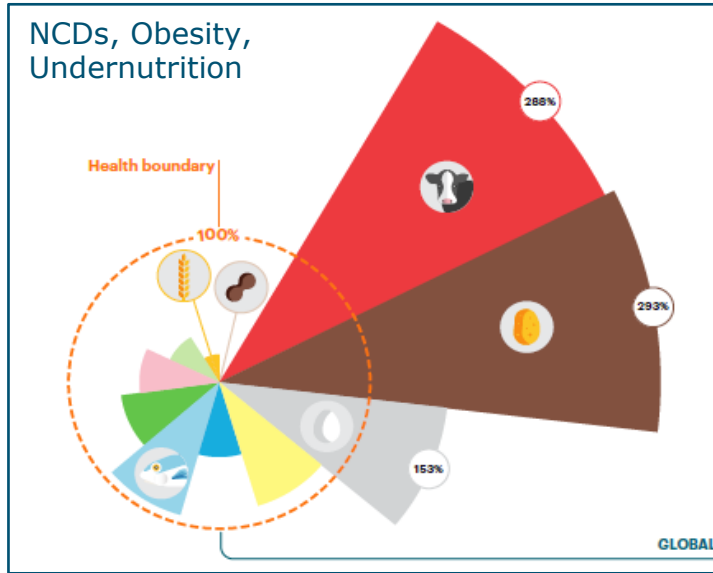
Overcoming fragmentation in the food, Nutrition & Health Research landscape

Quisper Personalised Nutrition Symposium with EuroFIR AISBL
June 19th 2019, Brussels.

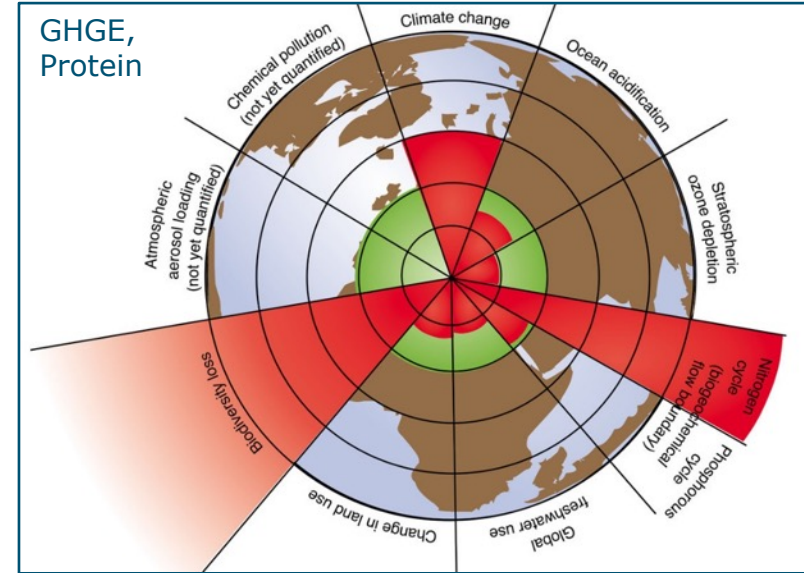
Pieter van 't Veer, Wageningen University, on behalf of the FNH-RI consortium



Challenge 21st century: healthy eating within planetary boundaries



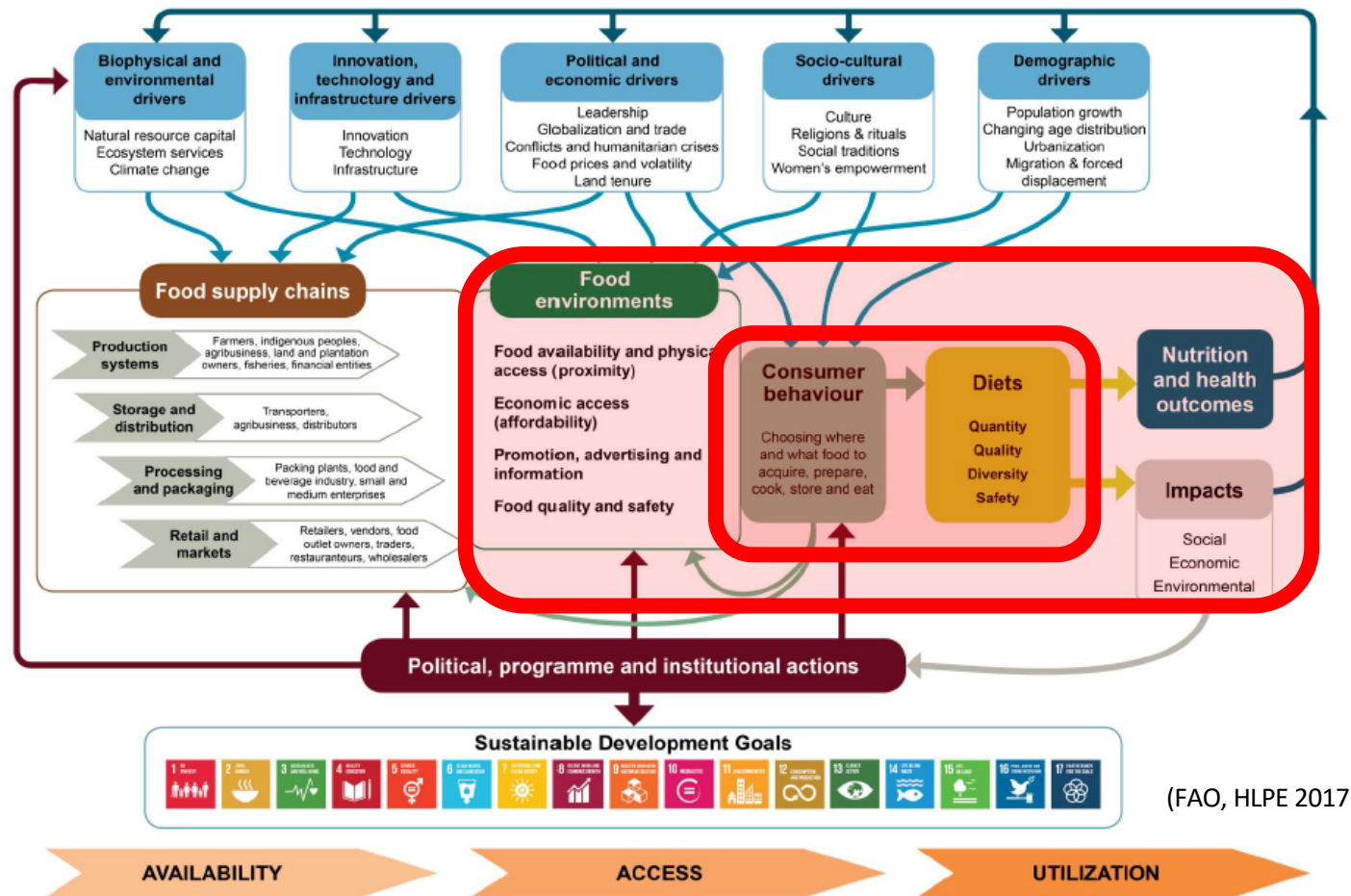
Optimal energy intake (BMI, physical activity)
 Diversity of plant-based foods, low animal foods
 Saturated fat → unsaturated fats
 Limit refined grains & highly processed foods
 Double fruits, vegetables, legumes and nuts
 Halving added sugars and red meat



Biodiversity loss (animals, plants, land use, monocultures)
 Nitrogen cycle (energy use, eutrophication, dead zones)
 Climate change (¼ GHGE agricult, acidification, sea level)

Willett et al, Lancet 2019
Rockström et al, Nature 2014

Social dimension: Healthy eating embedded in food system



Fragmented research in FNH-domain



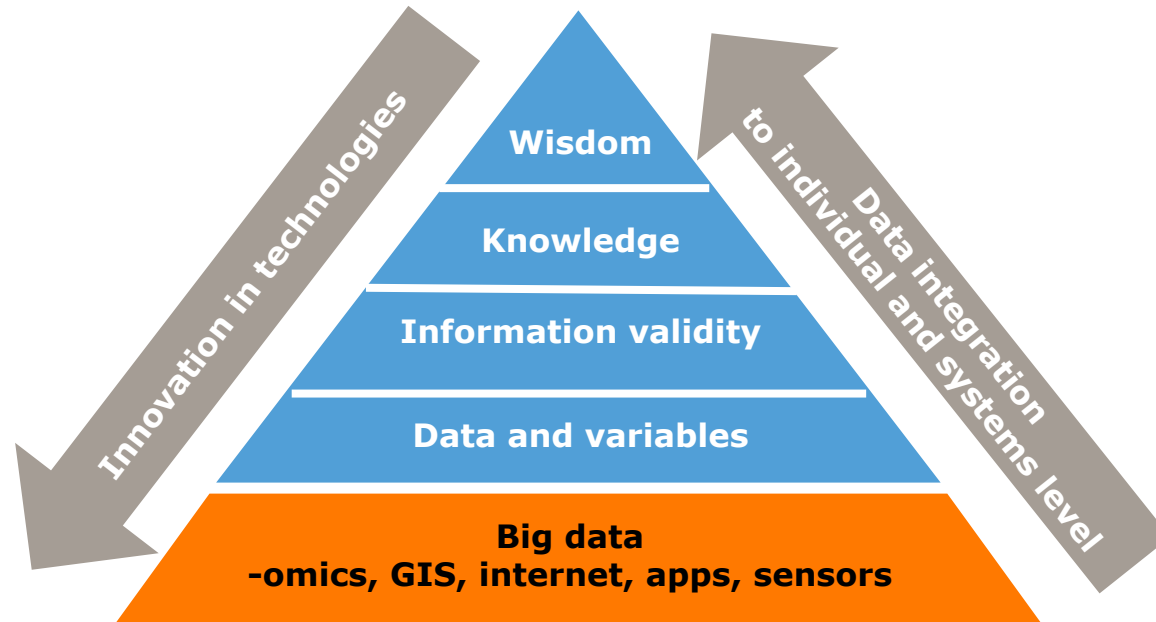
Science

- Disciplines: life sciences, social sciences
- Bibl analysis: 10,232 unique researchers from 998 institutions (Europe)

Society

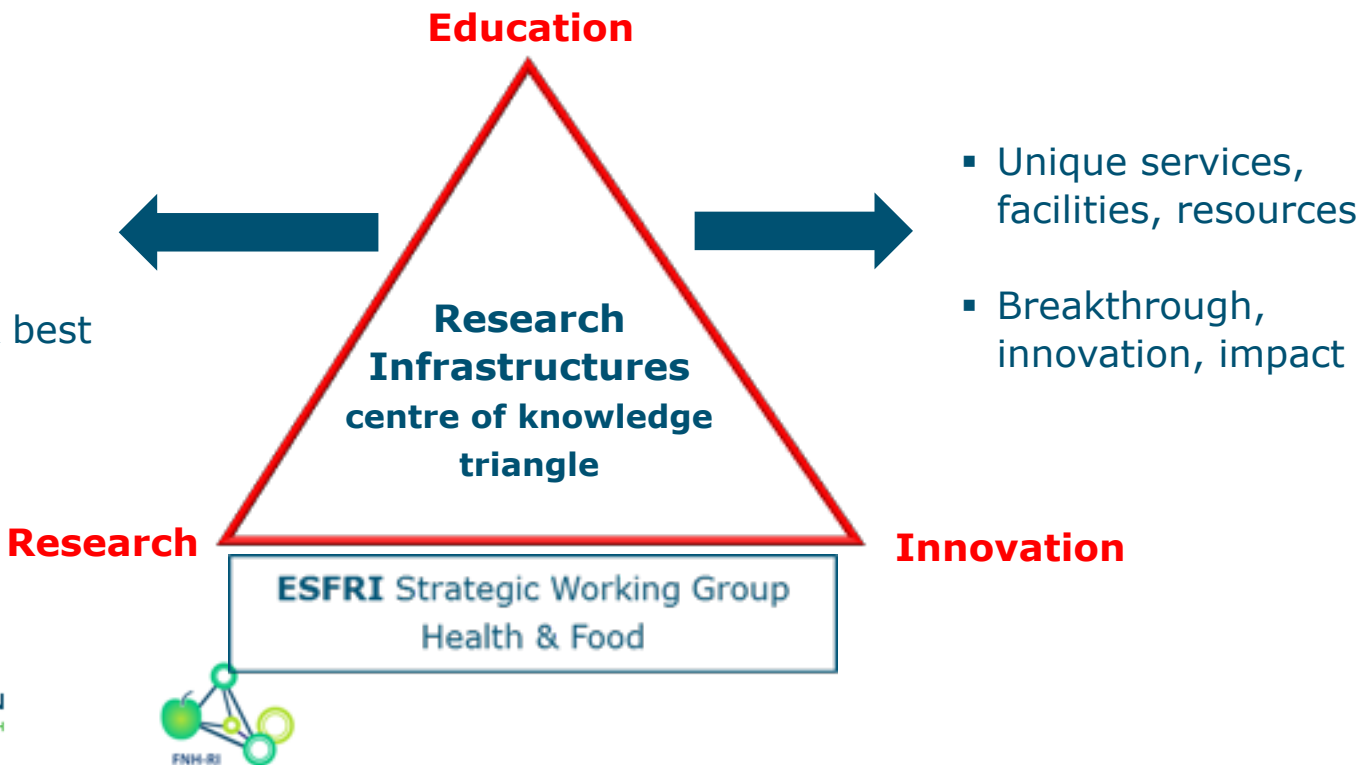
- Sectoral fragmentation: Min of health, agriculture, economic affairs, ...
- Governance levels: Global, European, national, municipal, ...
- Research funding: Public, public-private partnerships, contract-research
- Economic relevance ca 10% GNP in agrifood, 10% in health (NL)

The challenge: BIG data & data integration across life sciences and social sciences



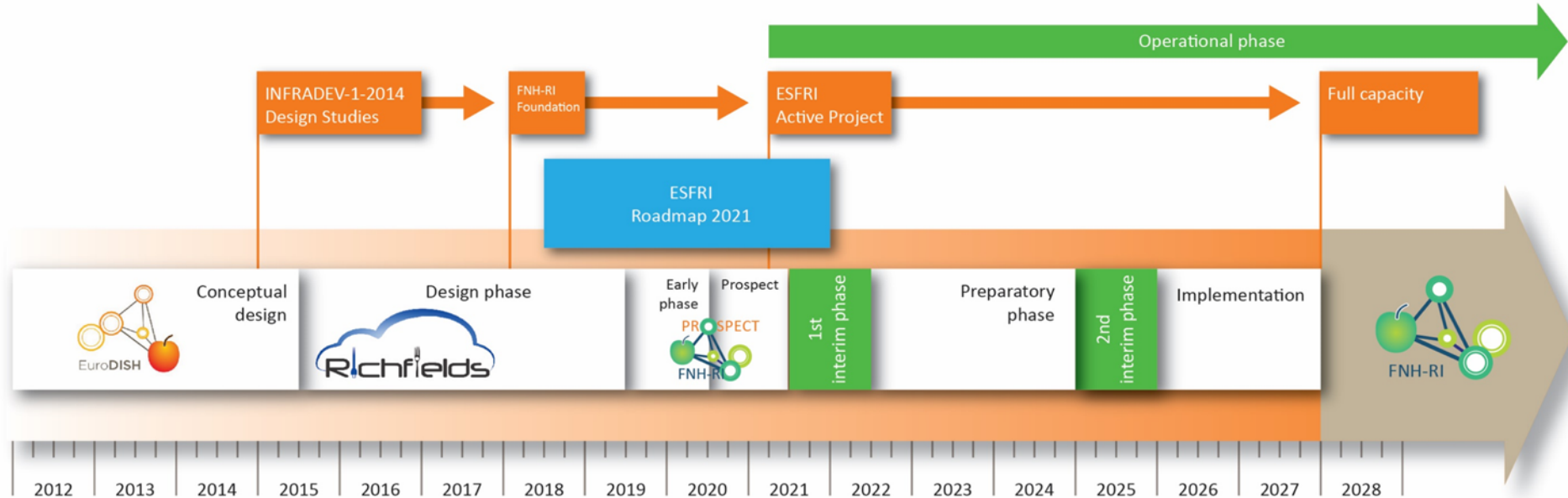
FNH-RI: enable scientific breakthroughs & innovation in health and food, via research, innovation and education

- Build bridges
- Shape scientific communities
- Attract young & best researchers



Time line to the pan-European Food, Nutrition and Health RI





Time line of the Food, Nutrition and Health RI

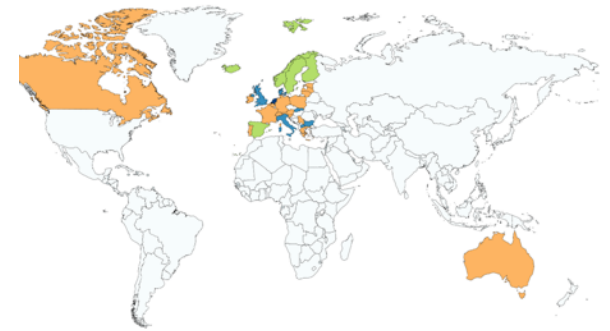


FNH-RI Community- Europe and Global



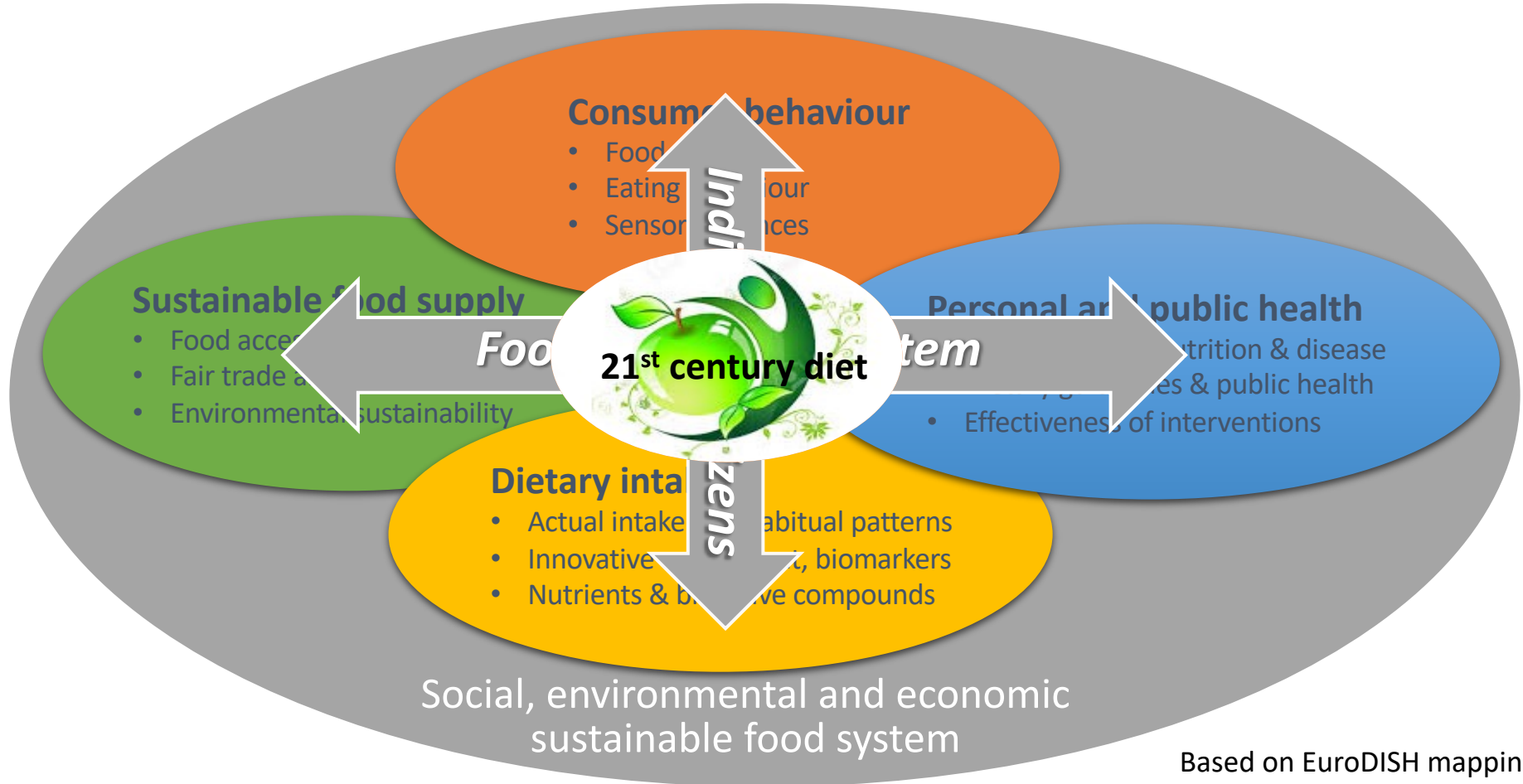
Legend:

-  Lead Country
-  Prospective country (National Node level)
-  Prospective country emerging at national node level
-  Prospective country emerging at institutional level

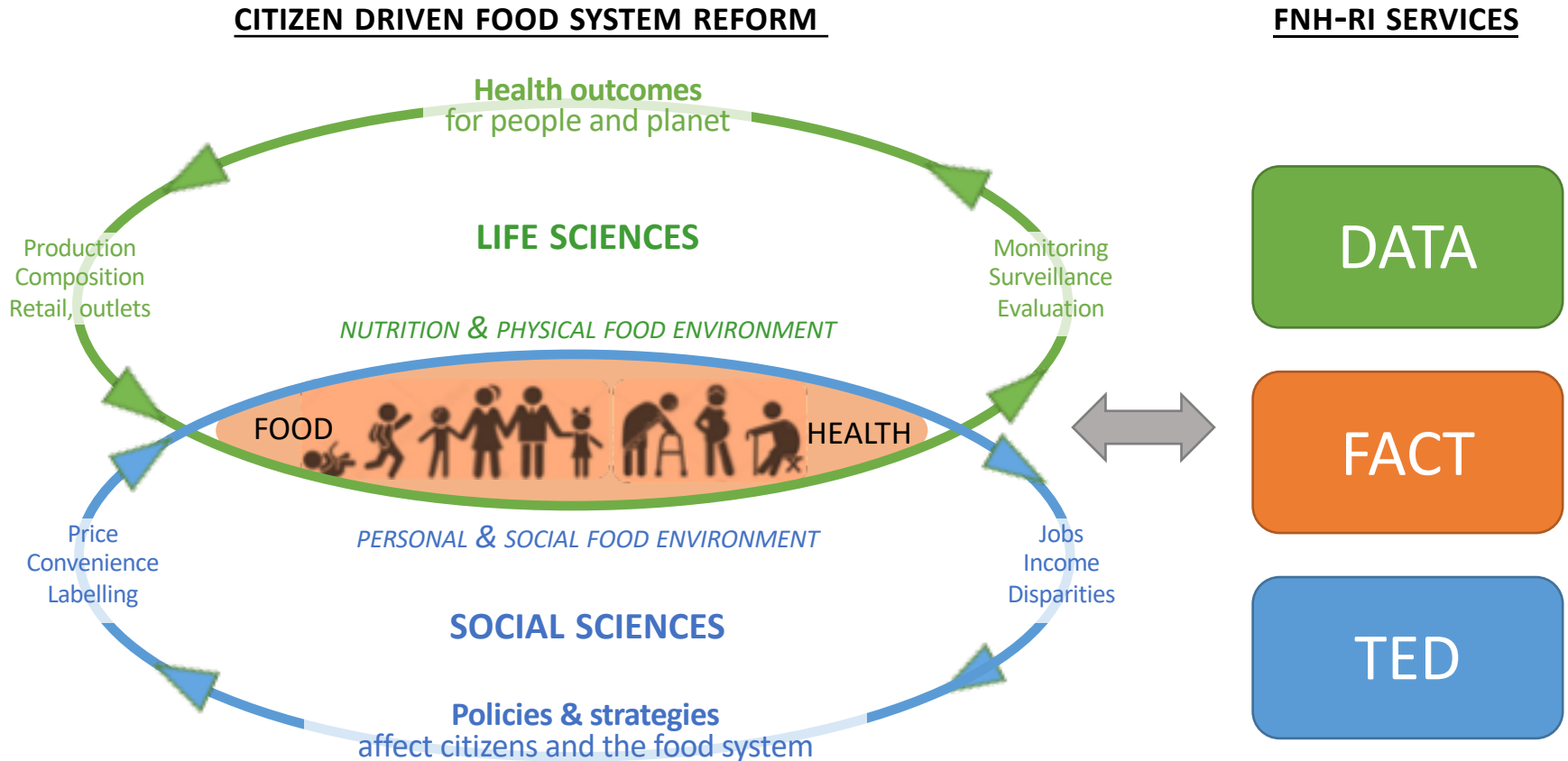


Task Force FNH Community, State of the art, June 2019

Food-Nutrition-Health: Four domains, two axes, one objective



FNH-RI services support breakthrough research



Service

Domains of the Food, Nutrition and Health RI

Objective

Sustainable
food supply

Consumer
behaviour

Dietary
intake

Personal
& public
health

TED Training,
Education &
Dissemination

*Create transdisciplinary research community, incl early
career researchers, professionals and stakeholders*

Co-creation of
research and
innovation

FACT
Facilities & Tools

*Assessment: citizen data platform (CDP), innovation
& standardization of tools, sharing of lab facilities*

Breakthrough on
dietary choices
of EU citizens

DATA sharing
& connectivity

*Study data: surveys, cohorts RCTs, community trials, food
composition databases, sensory databases, etc*

Healthy &
sustainable
food system

Food
security,
planetary
boundaries

Psychology,
sensory,
food
environment

Nutrition,
dietetics,
biomarkers,
requirements

Physiology,
risk markers,
burden of
disease



WAGeningen
UNIVERSITY

FNH-RI Architecture

FNH-RI services to

- Scientists (research)
- Public & private stakeholders
- Consumers / citizens
- DATA (upload & use of metadata, data-sharing, interfaces)
- FACT (access to research facilities, tools & models).
- TED: Training & Education, Dissemination & Co-creation

Food, Nutrition & Health Linked Data Platform

Ontology

Semantic
modelling

Meta data

FAIR

Protocols and
metrics

Software and
tools (ML, AI)

Standards

Harmonisation

Thesaurus

Protocols

Data collection

Labs and facilities

Databases

FNH Consumer Data Platform

Experimental labs

- Virtual buffets
- Restaurants of the future
- Virtual supermarkets
- Scape lab
- Mood rooms

Facilities

- Sensory labs
- MRI scan
- Protein accelerator (Lund)

Food data

- Purchase
- Preparation
- Dietary intake
- Composition
- LCA

Adjacent RI's

- ELIXIR
- ECRIN
- BBMRI
- METROFOOD

Platforms

- EUROFIR
- Quisper

RICHFIELDS Research app for data on food-related behaviour of consumers and intake



- New sensors, apps wearables, ...
- FFQ, FCMQ, 24 hour recall

Services and impact

TED
reform

- transdisciplinary FNH community
- young researchers & professionals

FACT
innovate

- food choice and diet patterns of citizens
- healthy and sustainability food system

DATA
connect

- citizen generated data
- public & private research data

Breakthrough
potential

Impact on
innovation
and society

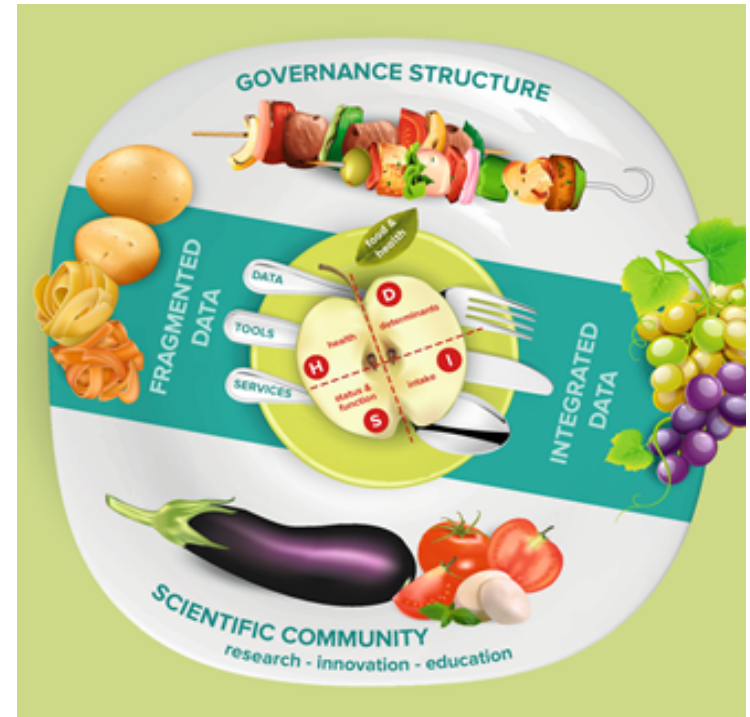
On behalf of all partners of
the FNH-RI consortium and
the partners of EuroDISH
and RICHFIELDS

**THANK YOU FOR
YOUR ATTENTION**

www.wur.eu/fnhri

pieter.vantveer@wur.nl

karin.zimmermann@wur.nl



FNH-RI will facilitate research
and innovate the diet of 21st
century citizens